



Test Report

No. : PRT13032000101
Date: 20 Mar 2013
Page 1 of 7

Applicant: Dong Guan CITY Ming Yu Shoe Materials Co., Ltd.
Address: Village,Liaoxia, Houjie Town, Dong Guan City

Sample Name: Non-woven
Color.: Black
Buyer: -
Supplier: -
Manufacturer: -

Receipt Date of Sample: 15 Mar 2013
Date of Testing: 15 Mar 2013 to 20 Mar 2013

Test Requested: (1) As specified by client, to determine the Pb,Cd,Hg,Cr+6,PBBs,PBDEs content in the submitted sample.
(2) As specified by client, to determine the DBP, BBP, DEHP content in the submitted sample.
(3) As specified by client, to determine the HBCDD content in the submitted sample.

Test Method: Refer to next page(s)

Test result: Refer to next page

Conclusion: Based on the performed tests on submitted samples, the results of Lead, Mercury, Cadmium, Hexavalent chromium, Polybrominated biphenyls (PBB), Polybrominated diphenyl ethers (PBDE) comply with the limites as set by RoHS Diretive 2011/65/EU AnnexII.

Prepared by:

Reviewed by:



Test Report

No. : PRT13032000101

Date: 20 Mar 2013

Page 2 of 7

Test Result(s):

(1) Test results for Pb,Cd,Hg,Cr+6,PBBs,PBDEs

Test Item(s):	Unit	Test Method (Reference)	Result	MDL	Limit
Cadmium(Cd)	mg/kg	IEC 62321:2008, ICP-OES	N.D.	2	100
Lead (Pb)	mg/kg	IEC 62321:2008, ICP-OES	N.D.	2	1000
Mercury (Hg)	mg/kg	IEC 62321:2008, ICP-OES	N.D.	2	1000
Hexavalent Chromium (CrVI) by alkaline extraction	mg/kg	IEC 62321:2008, UV-Vis	N.D.	2	1000
Sum of PBBs	mg/kg	-	N.D.	-	1000
Monobromobiphenyl	mg/kg	IEC 62321:2008, GC-MS	N.D.	5	
Dibromobiphenyl	mg/kg	IEC 62321:2008, GC-MS	N.D.	5	
Tribromobiphenyl	mg/kg	IEC 62321:2008, GC-MS	N.D.	5	
Tetrabromobiphenyl	mg/kg	IEC 62321:2008, GC-MS	N.D.	5	
Pentabromobiphenyl	mg/kg	IEC 62321:2008, GC-MS	N.D.	5	
Hexabromobiphenyl	mg/kg	IEC 62321:2008, GC-MS	N.D.	5	
Heptabromobiphenyl	mg/kg	IEC 62321:2008, GC-MS	N.D.	5	
Octabromobiphenyl	mg/kg	IEC 62321:2008, GC-MS	N.D.	5	
Nonabromobiphenyl	mg/kg	IEC 62321:2008, GC-MS	N.D.	5	
Decabromobiphenyl	mg/kg	IEC 62321:2008, GC-MS	N.D.	5	
Sum of PBDEs	mg/kg	-	N.D.	-	1000
Monobromodiphenyl ether	mg/kg	IEC 62321:2008, GC-MS	N.D.	5	
Dibromodiphenyl ether	mg/kg	IEC 62321:2008, GC-MS	N.D.	5	
Tribromodiphenyl ether	mg/kg	IEC 62321:2008, GC-MS	N.D.	5	
Tetrabromodiphenyl ether	mg/kg	IEC 62321:2008, GC-MS	N.D.	5	
Pentabromodiphenyl ether	mg/kg	IEC 62321:2008, GC-MS	N.D.	5	
Hexabromodiphenyl ether	mg/kg	IEC 62321:2008, GC-MS	N.D.	5	
Heptabromodiphenyl ether	mg/kg	IEC 62321:2008, GC-MS	N.D.	5	
Octabromodiphenyl ether	mg/kg	IEC 62321:2008, GC-MS	N.D.	5	
Nonabromodiphenyl ether	mg/kg	IEC 62321:2008, GC-MS	N.D.	5	
Decabromodiphenyl ether	mg/kg	IEC 62321:2008, GC-MS	N.D.	5	

Note : 1. mg/kg = ppm

2. N.D. = Not Detected (< MDL)

3. MDL = Method Detection Limit

4. "-" = Not regulated

This Test Report is issued by the Company subject to its General Conditions of Service printed overleaf or available on request and accessible at www.prt-test.com.cn. Attention is drawn to the limitations of liability, indemnification and jurisdictional issues defined therein. Unless otherwise stated the results shown in the test report refer only to the sample(s) tested. This test report cannot be reproduced, except in full, without prior written permission of the Company. Any unauthorized alteration, forgery or falsification of the content or appearance of this report is unlawful and offenders may be prosecuted to the fullest extent of the law.

Dongguan PRT Testing
Consultant Co., Ltd.

No.4First Ring Road, Yuefanshan Park Rd. Shanmei, Houjie Town, Dongguan City
中国 广东 东莞市厚街镇珊美岳范山公园路一环路4号

0769-85038286
Prt-test.com.cn

0769-85034386
E-mail:isotest@sina.com



Test Report

No. : PRT13032000101
Date: 20 Mar 2013
Page 3 of 7

(2) Test results for DBP, BBP, DEHP

Test Item(s):	Unit	Test Method (Reference)	Result	MDL	Limit
Bis (2-ethylhexyl) phthalate (DEHP)	%(w/w)	EN 14372:2004, GC-MS	N.D.	0.005	-
Dibutyl phthalate (DBP)	%(w/w)	EN 14372:2004, GC-MS	N.D.	0.005	-
Benzyl butyl phthalate (BBP)	%(w/w)	EN 14372:2004, GC-MS	N.D.	0.005	-

- Remark:
1. ppm = parts per million = mg/kg
 2. N.D. = Not detected
 3. < = Less than
 4. Detected limited = 0.005%(w/w)

(3) Test results for HBCDD

Test Item(s):	Unit	Test Method (Reference)	Result	MDL	Limit
Hexabromocyclododecane and all major diastereoisomers identified: (α -HBCDD, β -HBCDD, γ -HBCDD)	mg/kg	US EPA 3054C:1996, GC-MS	N.D.	10	-

- Remark:
1. ppm = parts per million = mg/kg
 2. N.D. = Not detected
 3. < = Less than
 4. Detected limited = 10 mg/kg

This Test Report is issued by the Company subject to its General Conditions of Service printed overleaf or available on request and accessible at www.prt-test.com.cn. Attention is drawn to the limitations of liability, indemnification and jurisdictional issues defined therein. Unless otherwise stated the results shown in the test report refer only to the sample(s) tested. This test report cannot be reproduced, except in full, without prior written permission of the Company. Any unauthorized alteration, forgery or falsification of the content or appearance of this report is unlawful and offenders may be prosecuted to the fullest extent of the law.

Dongguan PRT Testing
Consultant Co., Ltd.

No.4First Ring Road, Yuefanshan Park Rd. Shanmei, Houjie Town, Dongguan City
中国 广东 东莞市厚街镇珊美岳山公园路一环路4号

0769-85038286
Prt-test.com.cn

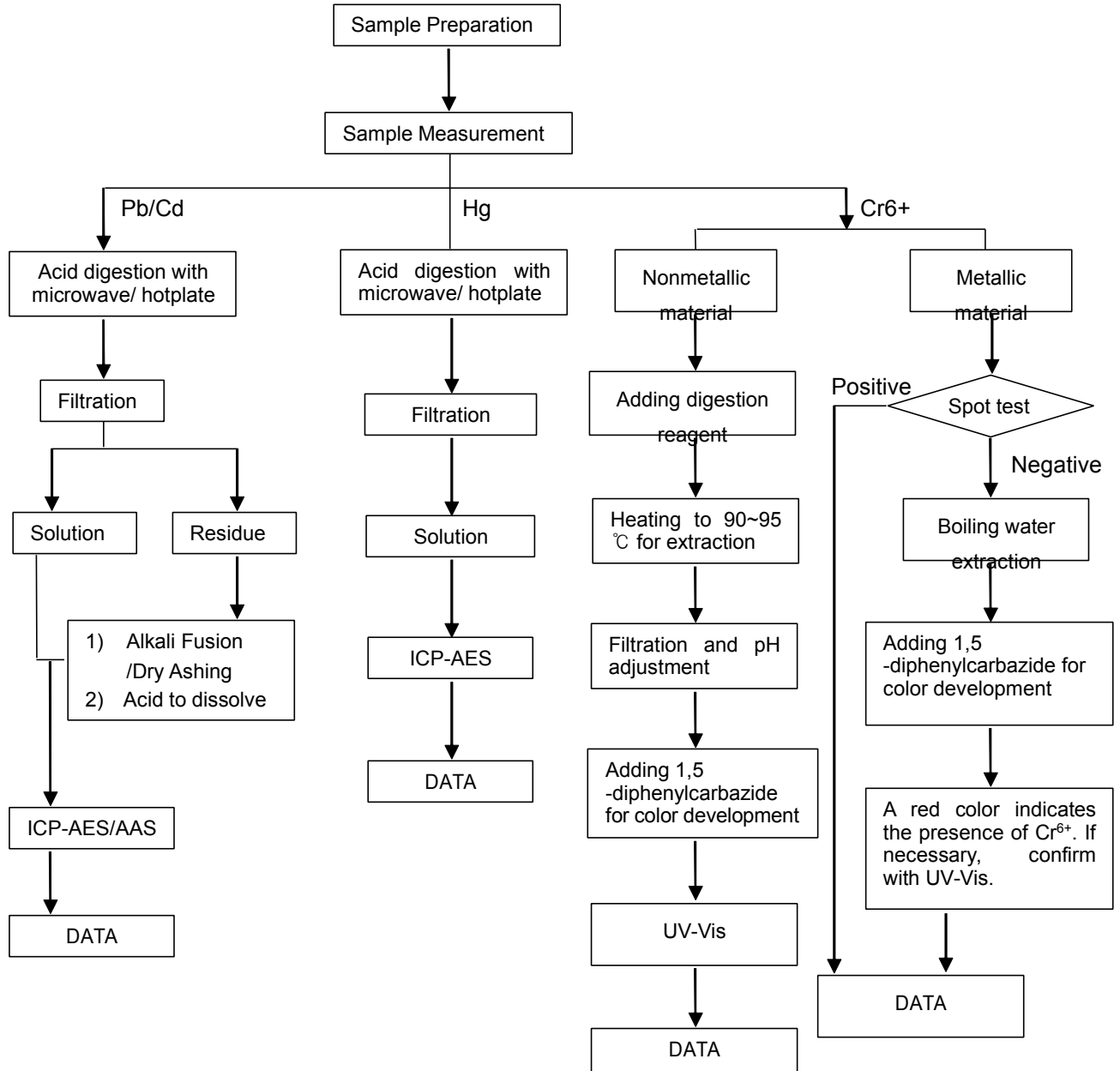
0769-85034386
E-mail:isotest@sina.com



Test Report

No. : PRT13032000101
 Date: 20 Mar 2013
 Page 4 of 7

Pb/Cd/Hg/Cr6+ Testing Flow Chart

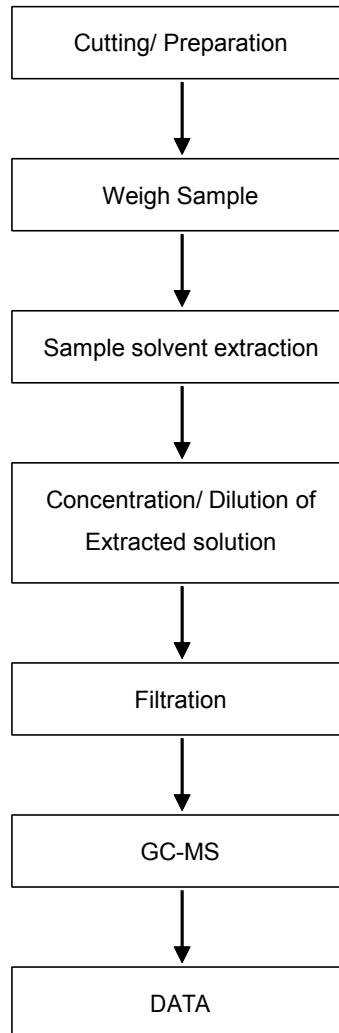




Test Report

No. : PRT13032000101
Date: 20 Mar 2013
Page 5 of 7

PBBs/PBDEs/ Testing Flow Chart

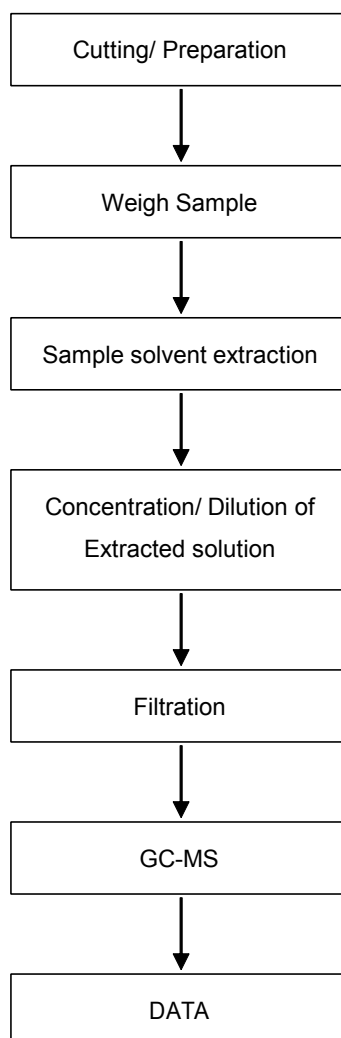




Test Report

No. : PRT13032000101
Date: 20 Mar 2013
Page 6 of 7

DBP/BBP/DEHP/HBCDD Testing Flow Chart



This Test Report is issued by the Company subject to its General Conditions of Service printed overleaf or available on request and accessible at www.prt-test.com.cn. Attention is drawn to the limitations of liability, indemnification and jurisdictional issues defined therein. Unless otherwise stated the results shown in the test report refer only to the sample(s) tested. This test report cannot be reproduced, except in full, without prior written permission of the Company. Any unauthorized alteration, forgery or falsification of the content or appearance of this report is unlawful and offenders may be prosecuted to the fullest extent of the law.

Dongguan PRT Testing
Consultant Co., Ltd.

No.4First Ring Road, Yuefanshan Park Rd. Shanmei, Houjie Town, Dongguan City
中国 广东 东莞市厚街镇珊美岳山公园路一环路4号

0769-85038286
Prt-test.com.cn

0769-85034386
E-mail:isotest@sina.com



Test Report

No. : PRT13032000101
Date: 20 Mar 2013
Page 7 of 7

Sample photo :



PRT authenticate the photo on original report only

***** End of Report *****